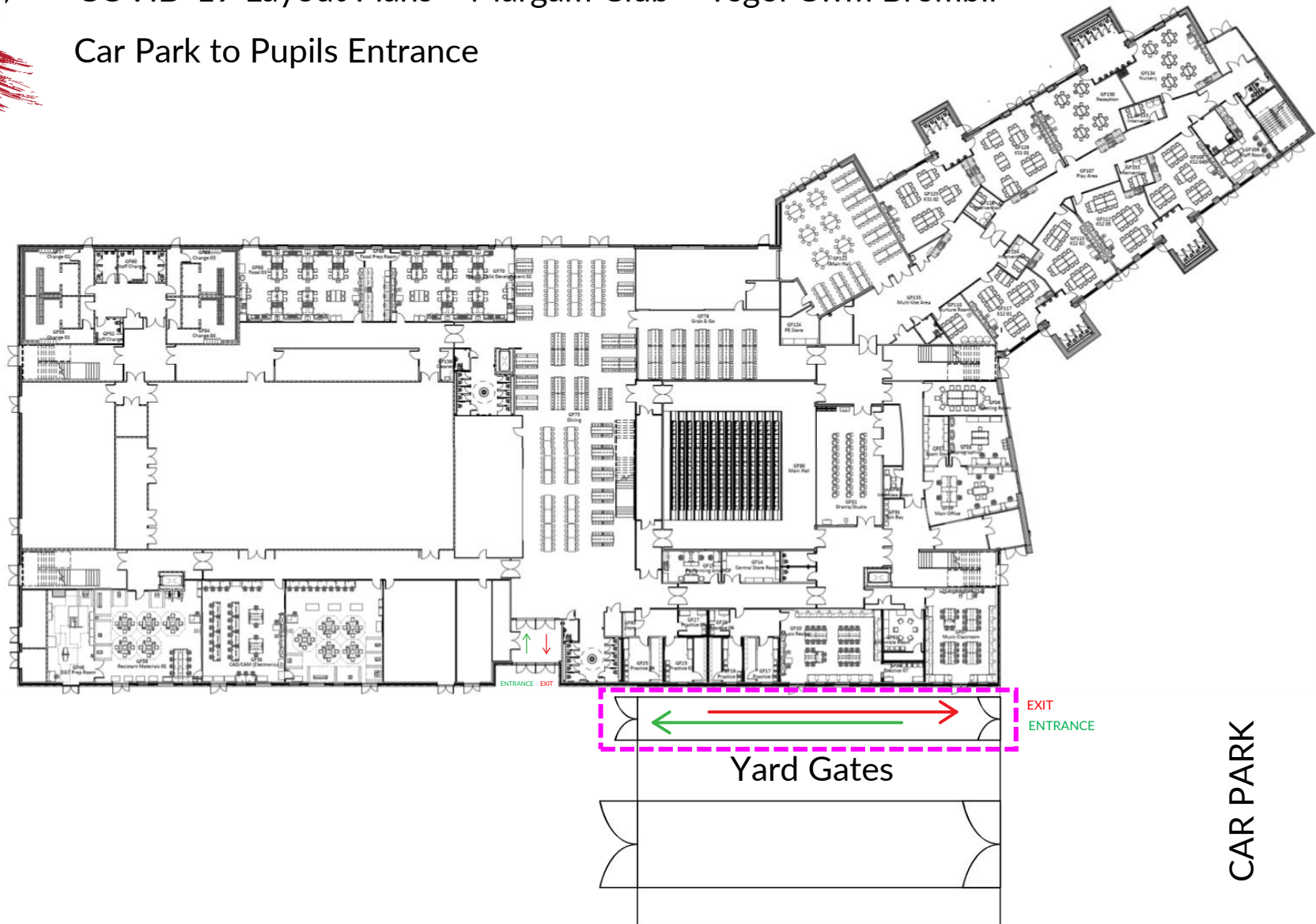


WELSH BUSHI-KAI KARATE ASSOCIATION

COVID-19 Layout Plans – Margam Club – Ysgol Cwm Brombil

Car Park to Pupils Entrance





WELSH BUSHI-KAI KARATE ASSOCIATION

COVID-19 Layout Plans – Margam Club – Ysgol Cwm Brombil

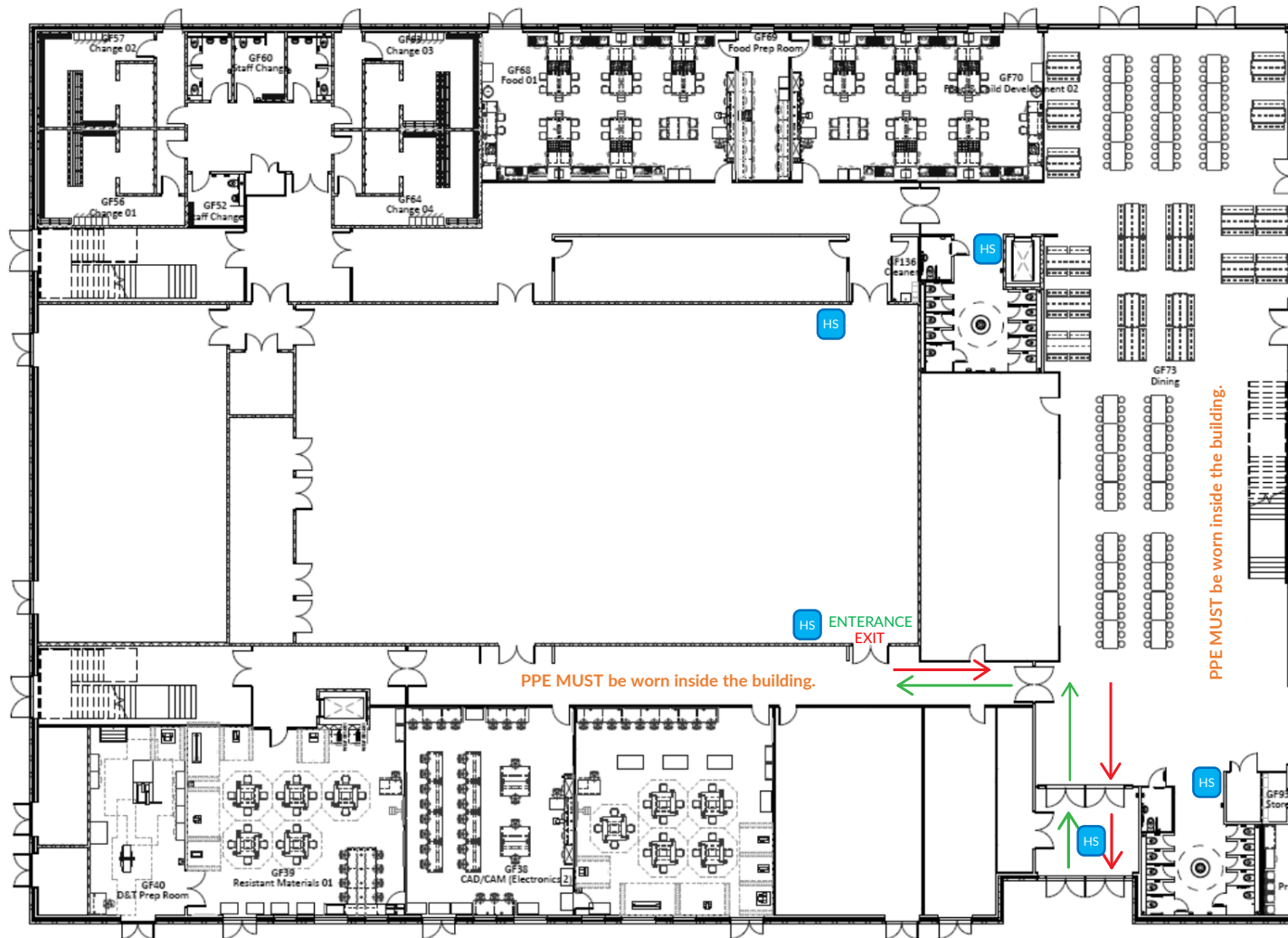
Entrance & Exit of Sports Hall/Dojo

KEY:

↑ Entrance

↓ Exit

HS Hand Sanitising Station

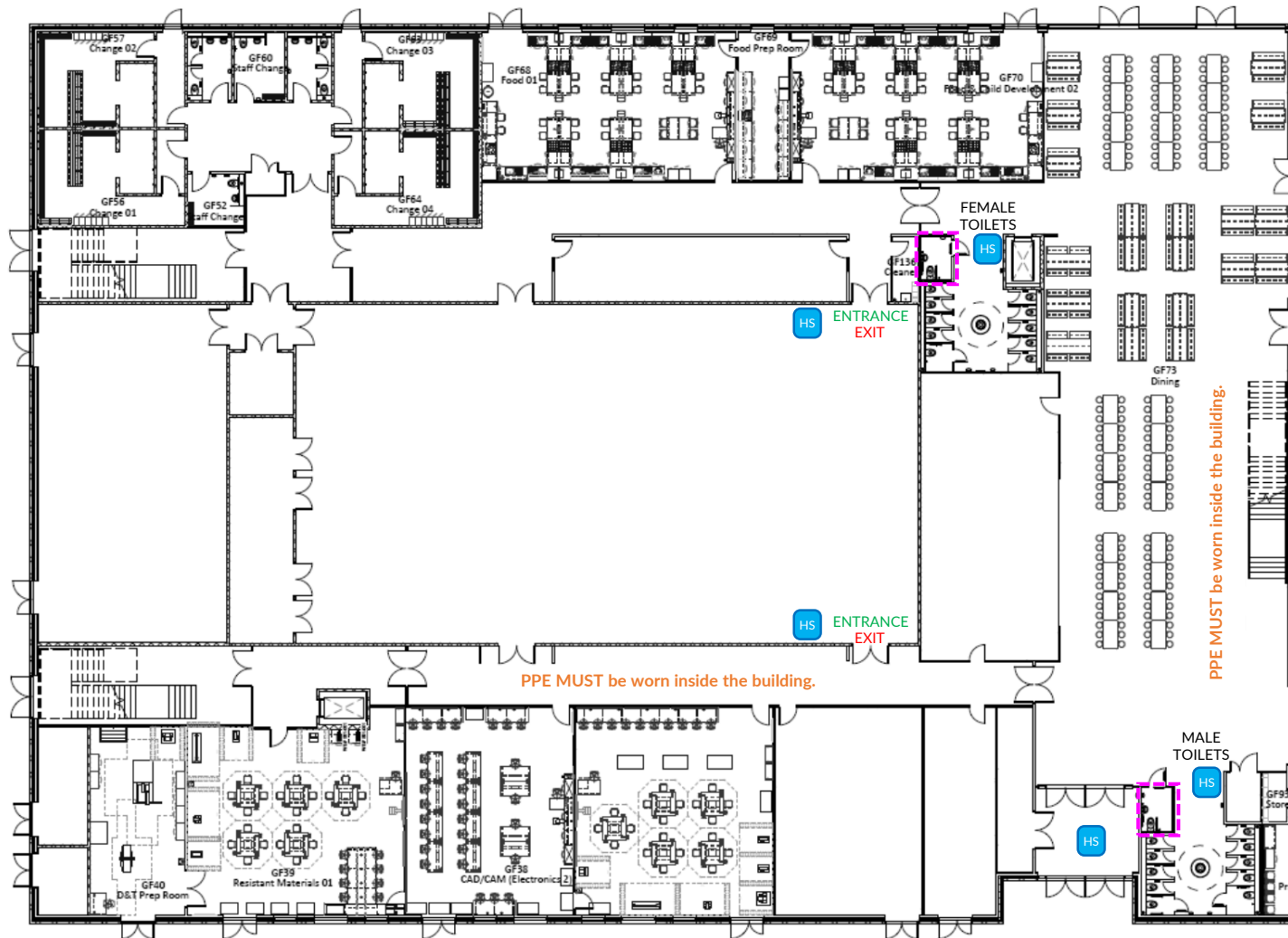




WELSH BUSHI-KAI KARATE ASSOCIATION

COVID-19 Layout Plans - Margam Club - Ysgol Cwm Brombil

Toilet Accessibility



KEY:



Disabled Toilet



Hand Sanitising Station

PPE MUST be worn inside the building.

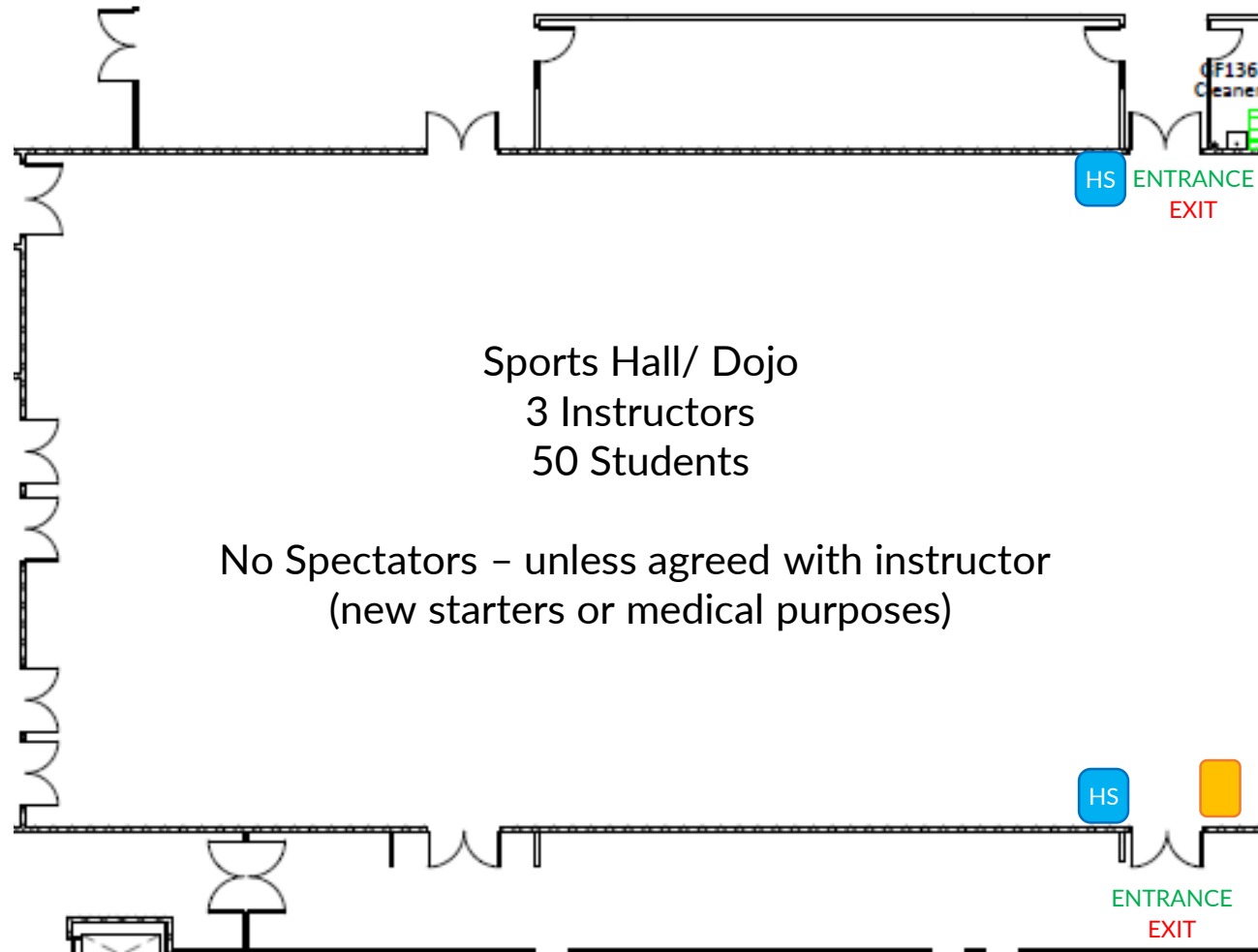
PPE MUST be worn inside the building.



WELSH BUSHI-KAI KARATE ASSOCIATION

COVID-19 Layout Plans – Margam Club – Ysgol Cwm Brombil

Sports Hall/ Dojo Layout



KEY:



Sign In Register



Hand Sanitising Station